

# TR. 1196 CONVERSION.

1

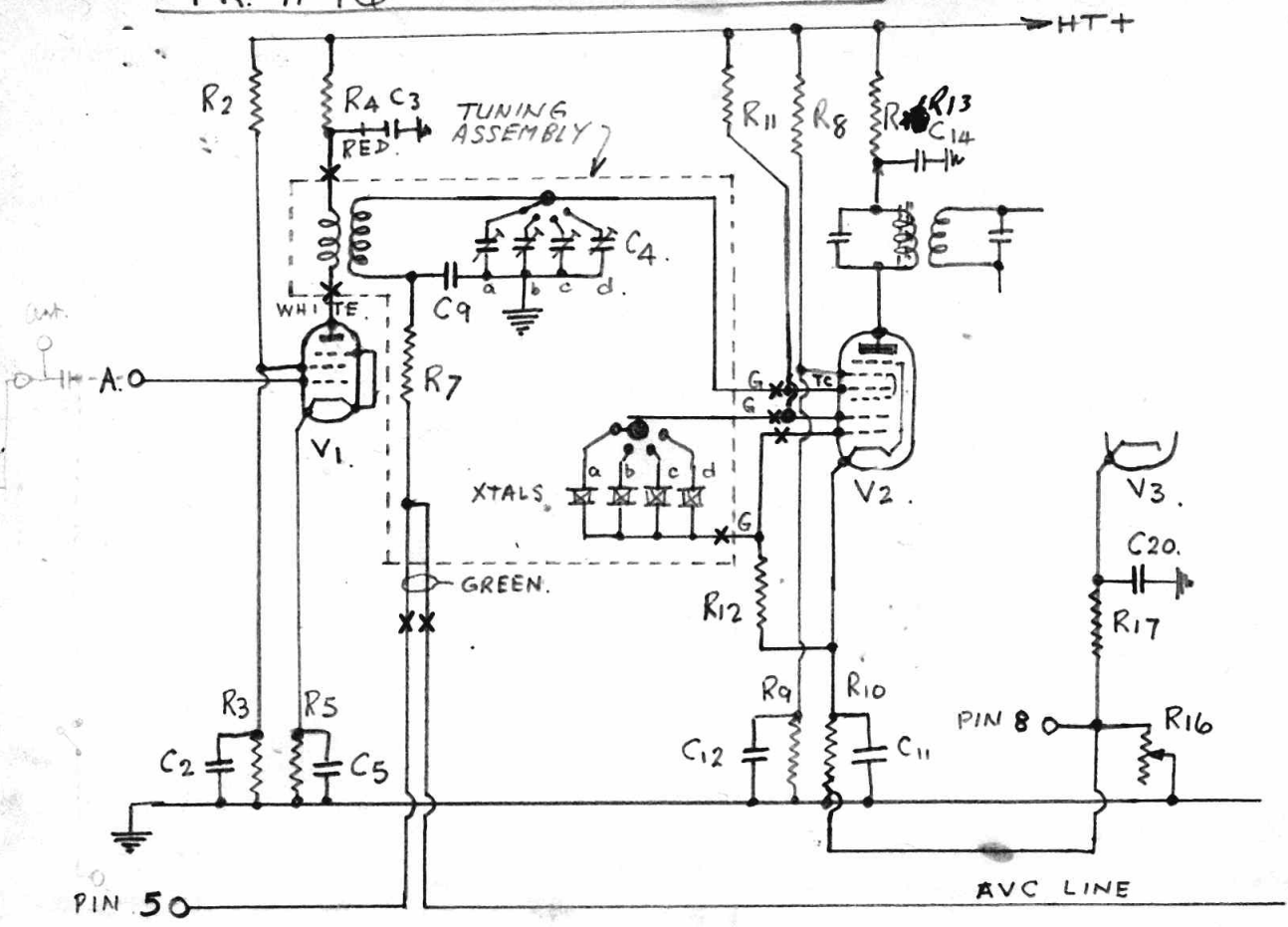
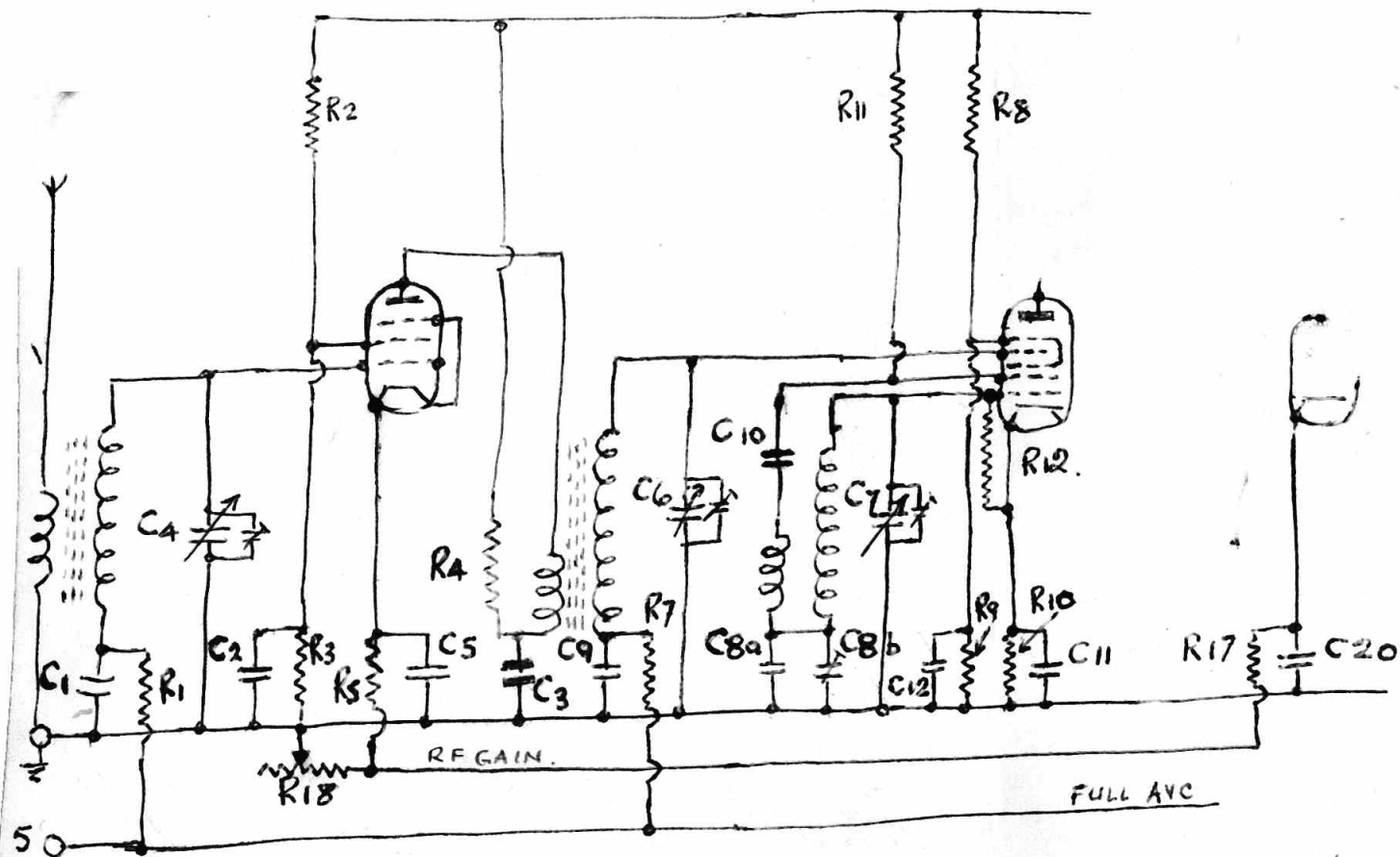


FIG 1.  
EXISTING CIRCUIT

- C2. -
- C3. -
- C4. -
- C5. -
- C9. -
- C

Remove Tuning Assembly by between removing 4 screws. but wires above chassis & box at points marked X.



- C1 -  $.01 \mu\text{F}$  (NEW, UNDER SUB-CHASSIS).
- C2 -  $.01 \mu\text{F}$  EXISTING.
- C3 -  $.01 \mu\text{F}$  (NEW, UNDER SUB-CHASSIS).
- C4 - 400PF TUNING & PHILLIPS TRIM.
- C5 -  $.01 \mu\text{F}$  EXISTING.
- C6 - 400PF TUNING & BUILT-IN TRIM.
- C7 - — di Ho —
- C8a - 500PF FIXED PADDER } OSC
- C8b - 100PF VARIABLE PADDER } SECTION.

- C9 -  $.01 \mu\text{F}$  (NEW, UNDER SUBCHASSIS).
- C10 - 300PF MICA, NEW UNDER MAIN CHASSIS)
- C11, C12 -  $.014 \cdot 1$  EXISTING
- R1 -  $0.1 \text{ M}\Omega$  (UNDER SUB-CHASSIS).
- R2 & R3 - EXISTING.
- R4 -  $2000 \Omega$  (MOUNTED ON COIL).
- R5 -  $400 \Omega$  (REMOVE FROM E & TAKE TO RF GAIN).
- R7 -  $0.1 \text{ M}\Omega$  (UNDER SUB-CHASSIS)
- R8/R11 - EXISTING.
- R17 -  $200 \Omega$  (BROWN LEAD TRANSFERRED FROM OLD TO NEW RF GAIN. (R18))

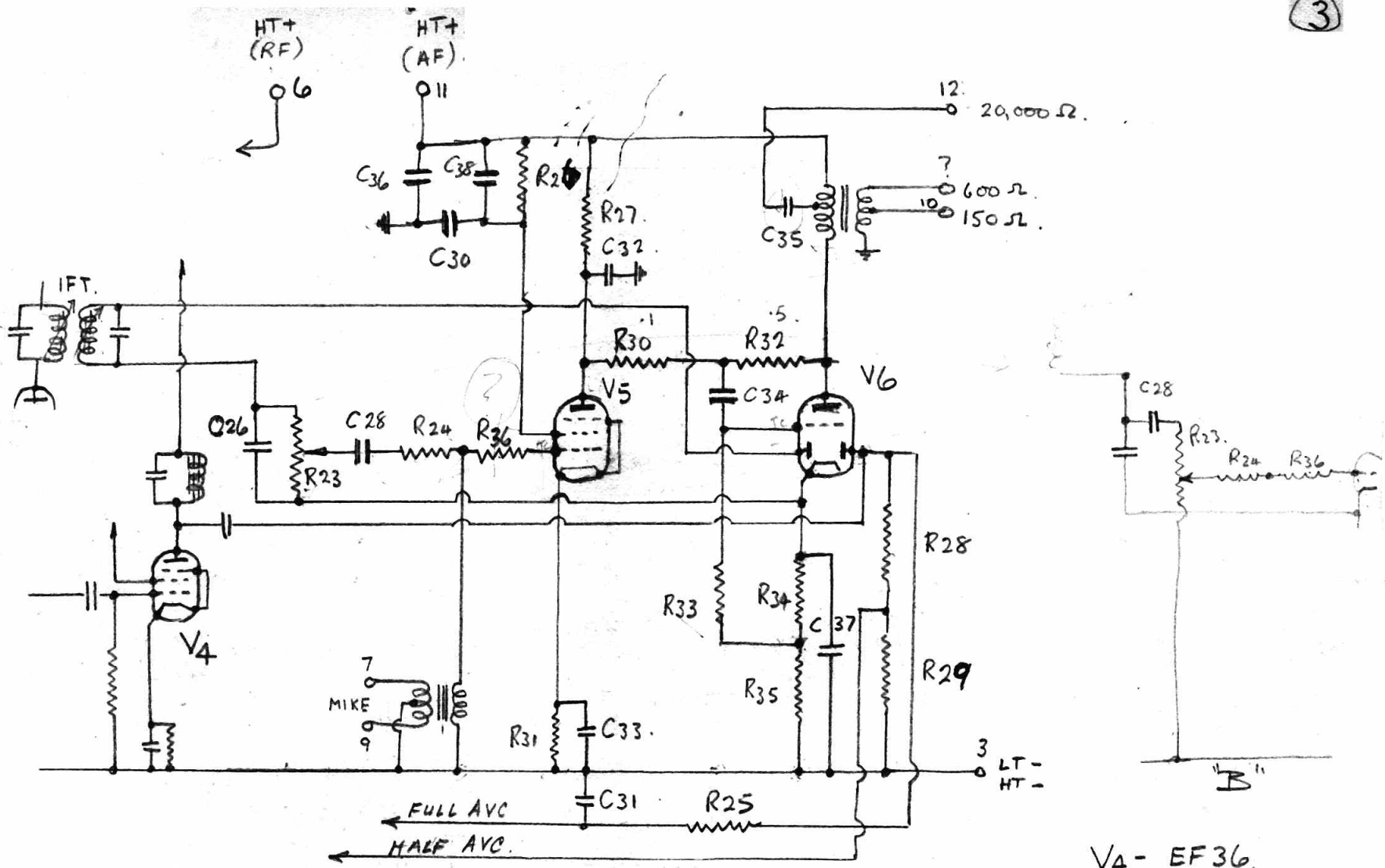


FIG 3

EXISTING AF 4 DET SECTION

- V4 - EF36.
- V5 - EF36.
- V6 - EBC.33.

Remove Mike Tx. Change V5 & V6 Grids & Probe Connections.  
 - Output Tx blank. R23 to spindle type. - Remove C35.  
 Change R23 for spindle type & rewire circuit as shown at "B".  
 Remove (or short out) R27 to put screen to HT+.  
 Substitute V5 (EF36) for EL.32. - OR Rewire Base to suit 6V6.  
 Transfer R33 from junction R30/R35 to chassis.

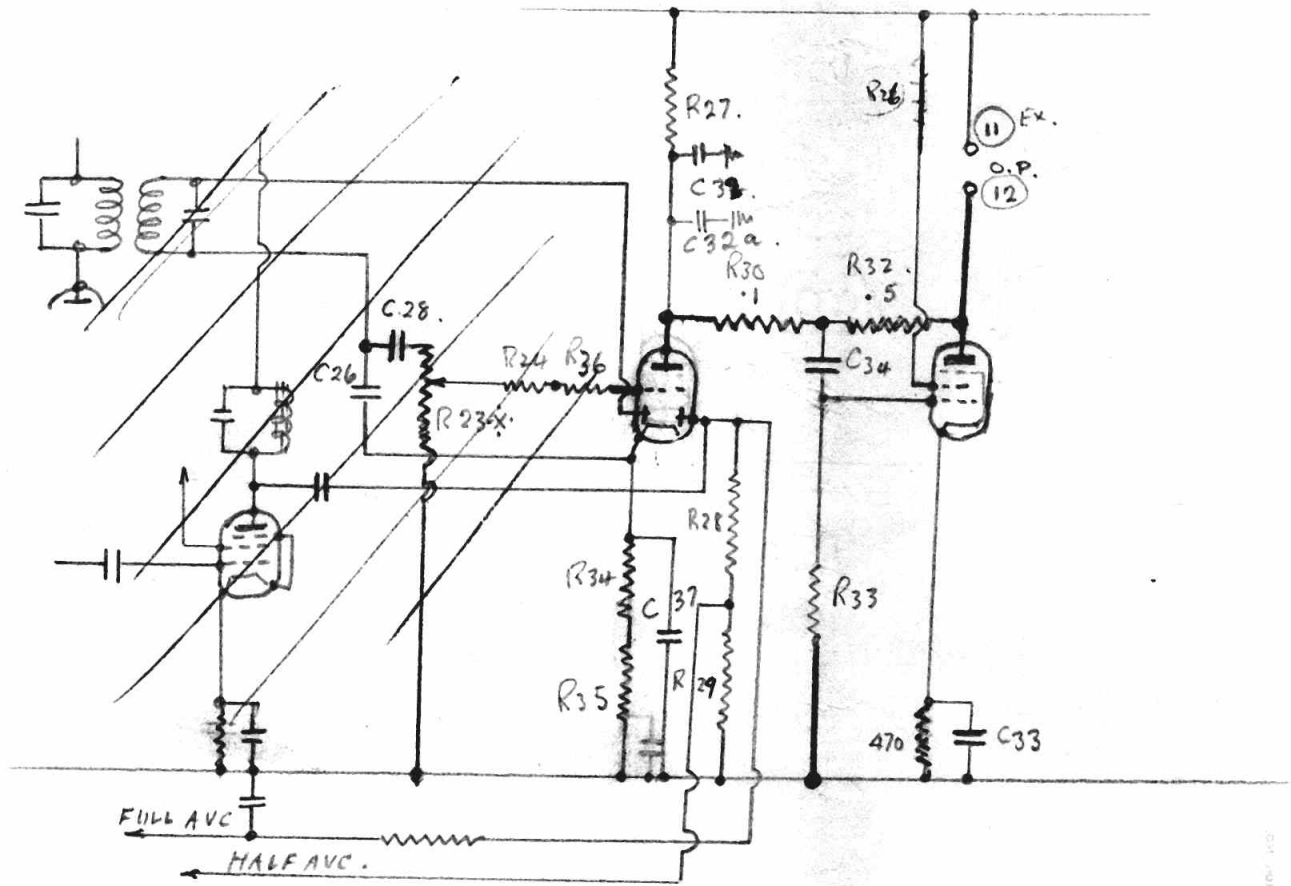


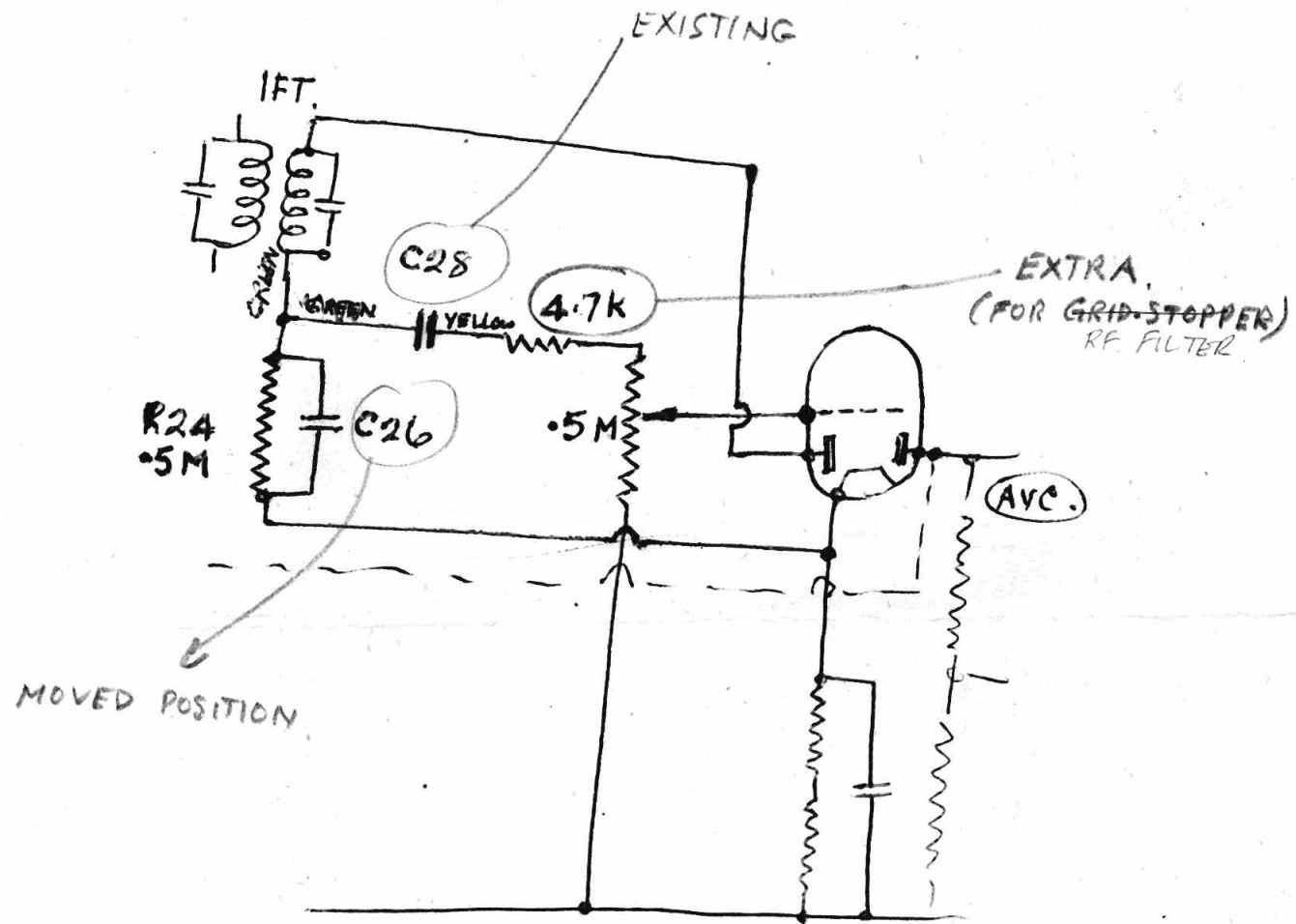
FIG 4

FINAL CIRCUIT OF DET & A.F. SECTION

(2000 pF)  
 C32a<sub>1</sub> added. 20/2/50 (var.) to cure bias

REFERENCE EXTENSION: 100  
 P.M. 1955

6-2-50



MODIFICATIONS TO A.F. STAGE & DET

6-2-50

VAR.  
C86 PADDER

FIXED  
C86a PADDER

EARTH  
WIRE

C10.

IFT.

R4

C9

R7

C3

R1

C1

